



26-27 Medway Street, Westminster
London SW1P

GARTONJONES.COM



26-27 Medway Street, Westminster
London, SW1P

GARTON JONES.COM

49 Marsham Street Sales +44 (0) 20 7340 0480
London westminster@gartonjones.com
SW1P 3DP www.gartonjones.com

£575 Per Week

We are pleased to offer this spacious 2 bedroom apartment of approx. 688 square feet available to let in this established secure development in the heart Westminster. The property is offered with furnished, available immediately and is located on the 1st floor with lift access in this small intimate building. The accommodation comprises of a bright reception room, two good size double bedrooms, a bathroom, separate fitted modern kitchen and wood flooring throughout. Medway Street is located within easy reach of the River Thames, Buckingham Palace and The Houses of Parliament. The transport links of St James's Park, Westminster and Victoria are all within walking distance. The surrounding area also offers a variety of amenities which include Sainsburys, Tesco's, Waitrose and many retail stores such as the House of Fraser, Hugo Boss and many others. There are a selection of many restaurants such as Osteria Dell'Angolo, The Cinnamon Club, The Ivy Victoria, Flight Club Victoria and many more.

- 2 Bedroom Apartment
- 688.sq.ft (63.9sq.m)
- 1st Floor (with Lift)
- 2 Double Bedrooms
- Bathroom
- Separate Kitchen
- Sold With Vacant Possession
- Close to Local Shopping Facilities
- Moments From The Transport Links Victoria, St James, Pimlico & Westminster

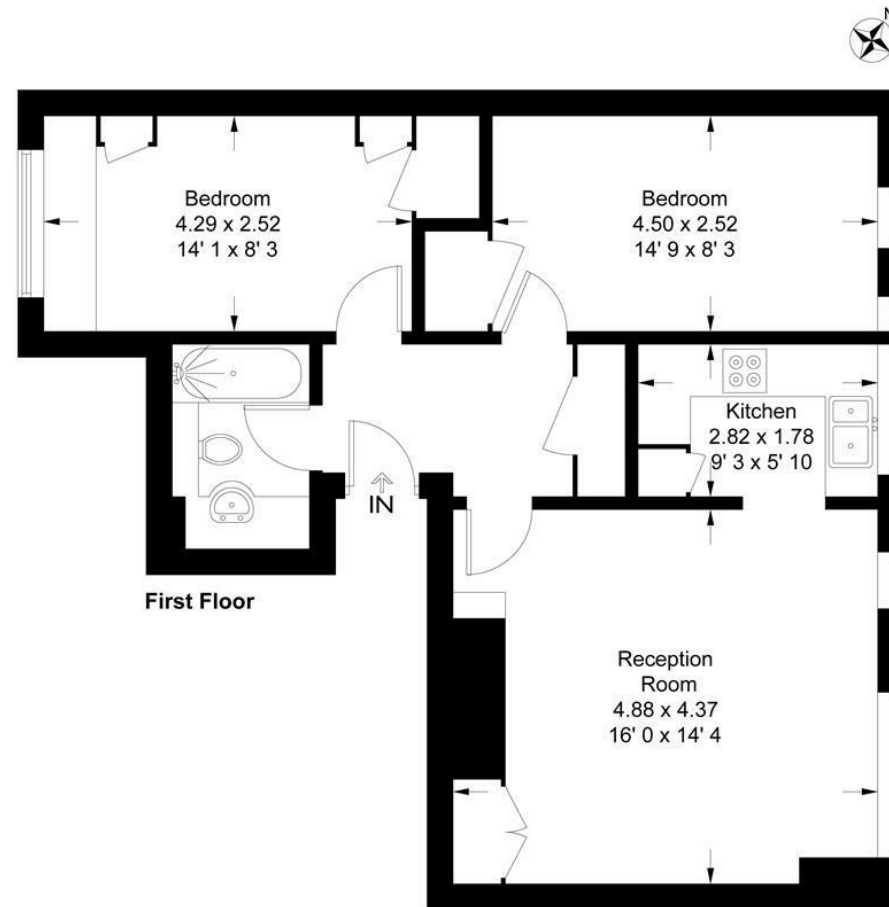


EPC certificate available on request.

Medway Street

Approximate Gross Internal Area = 688 sq ft / 63.9 sq m

GARTON JONES
LONDON



This plan is not to scale and must be used as layout guidance only. All measurements and areas are approximate and should not be relied upon to provide accurate information. This plan must not be relied upon when making property valuations, design considerations or any other such relevant decisions. We accept no responsibility or liability (whether in contract, tort or otherwise) in relation to any loss whatsoever arising from or in connection with any use of this plan or the adequacy, accuracy or completeness of it or any information within it.



